



CEO Update

...a periodic newsletter for
"special friends" of
Wendell Foster's Campus

"Empowering People...Realizing Dreams"

New SCL Home Opens



With the early August sun shining brightly and Chamber of Commerce Ambassadors, family and other guests looking on, Andy, Willie and Jerry cut the ribbon and then invited visitors to tour their new home at 618 Center St. in Owensboro. All three young men previously lived in the Campus' Intermediate Care Facility. They look forward to a more independent lifestyle in their new, completely wheelchair accessible, "bachelor pad."

Summer Vacations Prove Fun for All

We all deserve a "break" now and then and the same is true for WFC residents who spend their days in work, training and therapy. This year, individuals have enjoyed trips to the Covington Aquarium, state parks and area lakes and to Louisville. Other trips are planned. In the picture above, Jeffrey holds a bat at the Louisville Slugger Museum. The Supports for Community Living program is still raising funds for its vacations, by having backyard cookouts and selling hamburgers to WFC staff and area residents and workers.



ANNUAL BENEFIT DINNER & AUCTION ! Saturday Evening, September 6



Feldhaus Elected

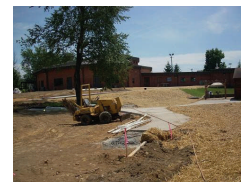
The WFC Resident Government has selected Roger Feldhaus as its new President. With this position comes a position on WFC's Board of Directors. Feldhaus works at Hugh Sandefur Industries and has his own internet business. He is active in his church and with the Old Owensboro Neighborhood Alliance. Feldhaus has a special interest in, and regularly attends, local government and "We the People" meetings.

Internships Serve Students and WFC

College student interns from around the state are offering supports to Campus programs this summer, while gaining valuable work experience, friendships and understanding of people who experience severe disabilities. This summer WFC had an intern in speech therapy from the University of Kentucky, a physical therapy student from Bellarmine, an occupational therapy aide intern from Madisonville Community College, a public relations major from Murray State and several nursing students from the Owensboro Community and Technical College. We're proud to be recognized as having the experienced professional mentors and specially equipped facilities needed to offer such learning opportunities.

Sensory Park Progress

As drainpipes are covered and 7th Street disappears, sidewalks are starting to emerge in the area that WFC is transforming into a unique and accessible sensory park and garden. Come see it!



To remove your name from this newsletter list, email me or call (270)-683-4517. Comments or questions? Email: tbrownson@wfcampus.org

Wendell Foster's Campus for Developmental Disabilities—
Terry Brownson, CEO

Vol. 3, No. 6, July-Aug. 2008



Newsletter Spotlight

In the picture above, Erin enjoys a visit from WFC's therapy dog, Daniel. Erin was attending WFC's annual "Sensory Camp" for autistic and other children who experience severe sensory impairments. Erin and other campers participate in a variety of activities aimed at improving everything from balance and coordination to tolerance for others and socialization. Daniel, a Labrador and Golden Retriever mix, is specially trained for this work.